

Unlocking Advancements in Immunology



ISOLATE | MAINTAIN | ANALYZE

1 ONE-STEP WHOLE BLOOD FRACTIONATION

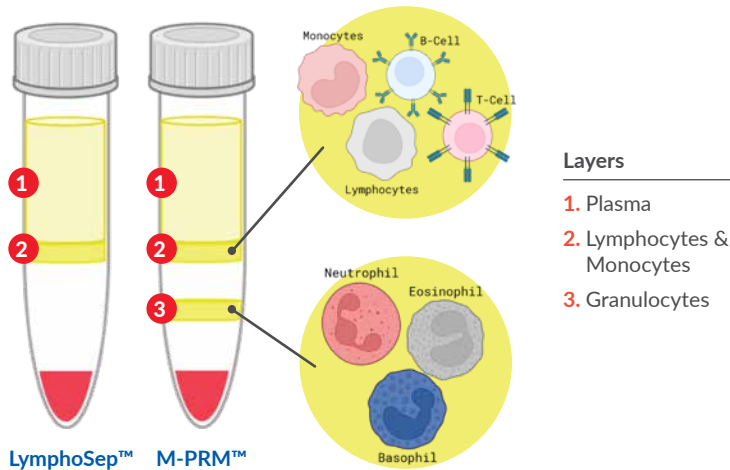
Isolate viable mononuclear and polymorphonuclear cells from blood with MP Bio's ready-to-use Lymphocyte Separation Medium (LymphoSep™) and Mono-Poly Resolving Medium (M-PRM™).



Lymphocyte Separation Medium
Cat. No. 091692254
Density: 1.077 g/mL



Mono-Poly Resolving Medium
Cat. No. 091698049
Density: 1.114 g/mL



2 MAINTENANCE & EXPANSION

Cell culture grade reagents for the expansion and maintenance of isolated immune primary cells and commercial cell lines including:

- Basal Media
- FBS Serum
- Human Serum
- Animal-free Supplements
- Xeno-free Supplements
- Amino acids
- Hormones
- Cryo Banking Solutions

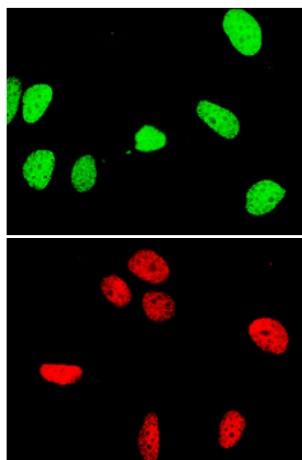


	Name	Cat. No.
Basal Media	RPMI 1640	091260354
	RPMI 1640 w/ HEPES	091082154
	RPMI 1640 w/o Glutamine	091260254
	RPMI 1640 w/o Glutamine, Glucose	091646854
	RPMI 1640 w/o Glutamine, Ph.Red	091646754
Serum	FastGro™ Synthetic, Chemically Defined Serum Alternative	092640049
	Human Serum Pooled	092931149
	Human Serum Type AB	092931949
	FBS, USDA Approved Origin	092910154
	FBS, USA Origin	092916754
Immune Cell Banking	Cryopres™ Dimethyl Sulfoxide (DMSO), USP, PhEur grade	0927801
	pZerve™ (No DMSO, FBS or Animal protein Cryo-solution)	0920303
	Cellvation (No DMSO)	0920300M2
	2-8 CELLsium™ (Good for storing cells at 4°C for 24-48 hr)	0927803

3 CELL-BASED ASSAYS

DNA Damage – γ H2AX Detection

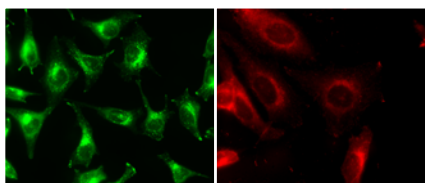
Monitor cellular toxicity with MP Bio's DNA damage detection kits. Assess pre-treatment and post-treatment DNA repair period to determine high vs low toxicity risks.



Name	Cat. No.
γ H2AX Detection 488G Kit	092696300
γ H2AX Detection 560R Kit	092696400
γ H2AX Detection 650FR Kit	092696500

Autophagy & Mitophagy Detection

Characterized levels of Autophagy and Mitophagy in immune and tumor cells to further assess cell survival of tumor microenvironment, tumor migration and invasion, resistance to chemotherapy, and tumor escape immunosurveillance.



Name	Cat. No.
FastMitophagy™ Detection Kit	092690201
LC3 Analogue Dye 488G Kit	092696600
LC3 Analogue Dye 700R Kit	092696700

4 DNA & RNA EXTRACTION AND ANALYSIS

MP Bio's SPINeasy® extraction kits are designed for simple, efficient, and rapid purification of DNA and RNA from whole blood, sorted immune cells, and various tissues.



Name	Cat. No.
SPINeasy® DNA Kit for Blood	116552050
SPINeasy® DNA Kit for Tissue & Bacteria	116532050
SPINeasy® RNA Kit for Tissue	116543050

5 PROTEIN ANALYSIS

Use MP Bio reagents to generate perfect gels that demonstrate drug mechanism of action (MOA) with our reliable antibodies for Metastasis and Immune Response markers.

	Name	Cat. No.
The Perfect Gel	Precast Protein Gel, Tris Glycine, 10% Acrylamide	08W00001
	Triple Color Precision Protein Ladder (10-180 kDa)	08L1000251
	Ultra-Blue Fast PAGE Gel Staining Solution	08X100001
	OneStep Western Blocker and Signal Enhancer (Protein-Free)	08X100002
	Ultra-Sense Femto-Plus Western ECL Substrate	08X100003
	Antibody Diluent	08980641
	FastAb Adjuvant	08642901
Shedding & Metastasis	CD63 Rabbit Monoclonal Antibody	08L100021
	CD9 Rabbit Monoclonal Antibody	08L100023
	CD81 Rabbit Monoclonal Antibody	08L100022
	TSG101/VPS23 Rabbit Monoclonal Antibody	08L100024
Immune Response & Metabolism	Human APO L1, Apolipoprotein L1, ELISA Kit	08L100040
	Anti-human Complement C3 goat IgG fraction, FITC	0855167
	Anti-human Complement C3 goat IgG fraction, HRP	0855237
	Anti-human Complement C4 goat IgG fraction, FITC	0855168
	Anti-human Complement C1Q goat IgG fraction, FITC	0855166

IMMUNE CELL SEPARATION RELEVANT PRODUCTS

Name	Cat. No.
LymphoSpinner™ Lymphocyte Isolation Tube	091692425
LymphoSpinner™ Sample Ready Lymphocyte Isolation Kit	091692725
SupraGLN™ 100X Stabilized Glutamine Supplement	091680348
Accutase® Cell Detachment Solution	091000449

