

CoolTeenPrep™ Adapter

The CoolTeenPrep™ Adapter enables the FastPrep-24™ 5G (116005500) and Classic (116004500) instruments to accommodate 6 x 15 mL Lysing Matrix tubes and homogenize samples under cryogenic conditions. The CoolTeenPrep Adapter consists of 2 parts (Fig 1):

- ▶ **Bottom component:** holding base for 15 mL tubes and dry ice
- ▶ **Top component:** holding plate to secure tubes, dry ice and adapter

⚠ ATTENTION ▶ *It is recommended to use either the Ratchet Nut v3.0, blue (116005510) or Cam Lock (116005588), sold separately, with this adapter. If any other nut not compatible with this adapter is used, there is a high risk of damage that may occur to the instrument.*

INSTRUCTIONS FOR USE

- 1 Load the 15 mL Lysing Matrix tube samples into the bottom component.
 - 2 Fill the inner trough of the bottom component with dry ice (Fig 2). 50–100 g dry ice will be sufficient to cool down samples during the homogenization process.
- ⚠ CAUTION** ▶ *Never put liquid ice or other liquids in this adapter.*
- 3 Firmly align the top component of the CoolTeenPrep adapter to the bottom component (Fig 3).
 - 4 Load the assembled CoolTeenPrep Adapter into the FastPrep-24 instrument. Rotate and align the 3 ridges underneath the bottom component to the 3 indents on the 3-Step Assembly of the FastPrep-24 instrument. Light pressure may be necessary to secure the adapter in place.

⚠ WARNING ▶ *Failure to secure the adapter as detailed in step 5 may result in PERMANENT and SEVERE adapter damage.*

Fig 1



Fig 2



Fig 3



► **DATA SHEET:** CoolTeenPrep™ Adapter

- 5 Secure the adapter with either the Ratchet Nut or Cam Lock on the FastPrep-24 instrument.

5.1: Use with Ratchet Nut system

Turn Ratchet Nut clockwise until the button presses hard on the adapter with a strong resistance (Fig 4). Ensure that the adapter does not move and that the Ratchet Nut is resistant to loosening.

5.2: Use with Cam Lock system (for FastPrep-24 5G only)

⚠ WARNING ► *Never turn Cam Lock on threaded bolt in the locked position.*

5.2.1 Place the Cam Lock in the unlocked position onto the threaded bolt (Fig 5). Rotate the Cam Lock latch clockwise to tighten down. Stop when Cam Lock contacts the top component of the adapter and resistance is felt.

5.2.2 Rotate approximately half turn counterclockwise.

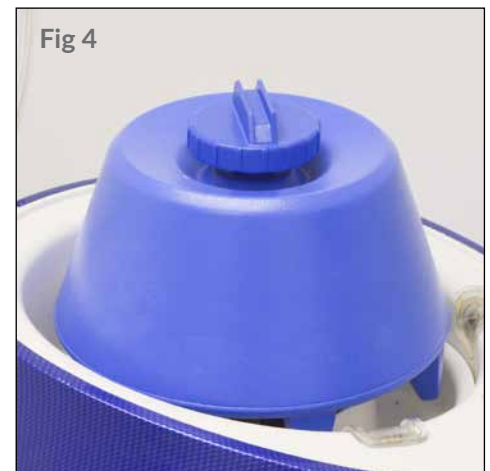
5.2.3 Flip up the lever arm to lock and hold the adapter steady with the other hand (Fig 6).

- 6 Close the dome and secure. Select program or use manual setting for speed, time and cycle. Press run key.

⚠ CAUTION ► *If the locking system becomes loose during the homogenization process, immediately stop the FastPrep-24 instrument by pushing down the emergency STOP BUTTON. Remove the locking system, clean the thread of the threaded bolt and repeat steps 5 and 6. If this repeatedly occurs, replace the locking system or contact MP Biomedicals technical support.*

- 7 If consecutive runs are necessary to completely lyse your sample, manually check for heat build-up to the adapter parts after each run. Before starting next run, hold palm of hand on the adapter top and body. If heat is present, allow enough time to cool down in between runs for the heat to dissipate. Failure to perform this step can cause adapter failure and damage.

Ratchet Nut system:



Cam Lock system (FastPrep-24 5G only):



MP BIOMEDICALS

AMERICAS: 800.854.0530 | biotech@mpbio.com

EUROPE: 00800.7777.9999 | techsupport.eur@mpbio.com

APAC: +65 6775.0008 | custserv.ap@mpbio.com

Learn more at www.mpbio.com

