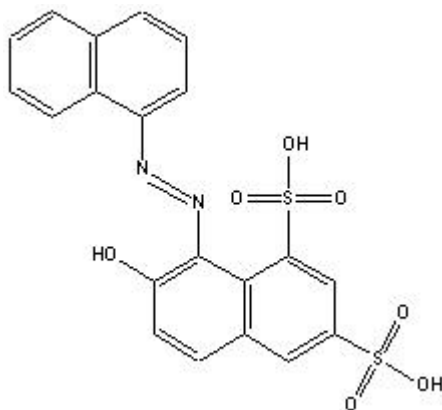


TECHNICAL INFORMATION

Catalog Number: 150732
Crystal poncaeu 6R

Structure:



Molecular Formula: C₂₀H₁₂N₂O₇S₂Na₂

Molecular Weight: 502.40

CAS #: 2766-77-0

Synonyms: Acid red 44; C.I. 16250

Physical Appearance: Red powder

Description: A biological protein stain, only slightly staining cellulose used in mocroscopy

Solubility: Soluble in water, alcohol, xylene, cellosolve ethylene, acetone, glycerol, dioxane etc